

## DATACARD® CD800™ CARD PRINTER



### THE NEW LOOK OF LEADERSHIP

*The CD800 card printer brings the New Look of Leadership to enterprise-class desktop card printers — built for outstanding speed, printing quality, flexibility and reliable performance.*

### The best value in enterprise-class desktop card printing

The Datacard® CD800™ card printer efficiently produces great-looking ID cards in less time than any other comparable desktop printer. It's engineered and built to handle the higher volumes and technical requirements of state and local government, corporate and educational card issuance. When your application demands speed, performance and reliability in a compact and efficient unit, the CD800 card printer is the ideal choice.

### A card production powerhouse fueled by innovation

- **Industry-leading print speeds.** The CD800 printer dramatically improves your card issuance throughput with printing speeds that rival the fastest card printers in its class.
- **Industry-leading image quality.** Reproduce intricate graphics such as state seals and school emblems with the CD800 printer's enhanced print modes. Resolutions up to 300 x 1200 dpi — an industry first — mean that fine text, 2D bar codes and complex two-byte character sets print sharp and bleed-free. Exclusive TrueMatch™ printing technology delivers vibrant colors that more closely match the colors on your screen.
- **Keep your environmental commitments.** The ENERGY STAR® qualified CD800 printer sets benchmarks for eco-friendly card printing with energy-efficient operation, biodegradable supply cores made with EcoPure® additive and recyclable printer components and packaging.
- **Reliable operation.** The CD800 printer withstands the daily demands of enterprise-level card issuance. Industry-exclusive TruePick™ card handling virtually eliminates jams by accurately picking cards, standard or thin, with no adjustments.
- **Best value today and tomorrow.** Rest assured that the CD800 printer investment you make now will continue to pay off in the future. Modular design lets you field upgrade your CD800 printers with different encoders and features as your card issuance needs change.

**Datacard**Group

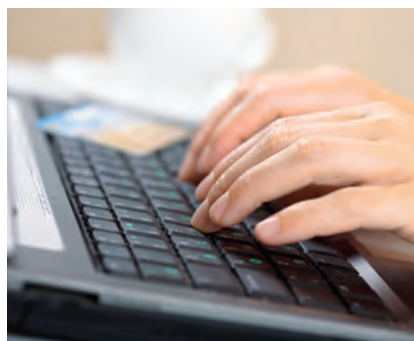
# Make the CD800™ printer part of your total card issuance solution



A long pedigree of experience and innovation guided the development of the Datacard® CD800™ card printer. We have more than 40 years of experience building card issuance systems, including more than 200,000 desktop systems. More than 350 government programs in 92 countries trust Datacard systems for their card issuance. So, we know the demands of your enterprise environment: Higher volumes. Extended production runs. Complex applications. More on-card technology. Greater security. All of these things factored into the design of the CD800 printer. You not only get a desktop card printer that's compact and easy to use, you get an enterprise-class machine that's ready to take on *your* application.

## Fits where most card printers don't

- **State and local government:** Datacard printers are the choice for hundreds of state and local government card issuance programs. The CD800 card printer's compact size and simple operation make it a great choice for a wide range of government applications, from transit passes to photo IDs for assistance program recipients.
- **Corporate:** Secure identification is the front-line defense for protecting people and assets. The CD800 card printer can produce a wide variety of employee, contractor and visitor badges, plus time and attendance cards and access control cards to secure facilities and parking.
- **Education:** Keep student registration lines moving with the reliable, high-speed CD800 card printer. Use it anywhere for on-the-spot issuance of multi-purpose campus cards, staff and student photo IDs, and access cards for libraries, residence halls and food services.



## Works on your network

Your IT department will have an easy time adding the CD800 card printer to your organization's network. It meets IT expectations for networked devices with standards-compliant Ethernet and USB connectivity. An internal print server eliminates the need for an external network box. IT administrators can keep your CD800 printer up and running from anywhere using remote management and diagnostics. There's also a rich set of software tools for easily integrating the CD800 printer into sophisticated, custom card issuance applications.

## Enterprise doesn't mean complicated

The CD800 card printer maximizes your team's productivity by minimizing the time they need to learn and operate it. Printer controls and both the input and output card hoppers are conveniently up front for easy access. The reloadable supply cartridge — which includes both printer ribbon and drop-in cleaning roller — simply loads into the top of the printer. Operation is a breeze. Intuitive icons and messages on the soft-touch LCD control panel guide you through printer operation, so you're never left wondering what to do next.



# One great printer, dozens of great innovations

Years of development and numerous customer input sessions have gone into the creation of the CD800 card printer. It's packed with industry-leading innovations and features, such as:

- Automatic 100-card input hopper with exception card slot
- Reloadable supply cartridges with drop-in cleaning roller
- Intuitive LCD panel with soft-touch controls and soft-power switch
- 25-card output hopper standard with optional 100-card output hopper
- Ethernet and USB connectivity standard on all CD800 printer models
- Optional, field-upgradable smart card and magnetic stripe encoding modules
- Two-sided or one-sided card printer models (factory option or field upgradeable)
- Color and monochrome printing in the same unit
- Advanced printer driver; support for third-party application development

The Datacard CD800 card printer is an ideal choice for applications such as:

- Employee, contractor and visitor IDs
- Student and faculty ID cards
- Government photo IDs for agency inspectors and public safety officers
- Photo IDs for assistance program participants
- Parks and recreation passes
- Library cards
- Transit passes
- Health care staff and patient IDs
- Club membership cards
- Ski resort passes
- Casino frequent player cards
- Customer loyalty cards



## The enhanced printing advantage

The CD800 card printer solves the problem of printing fine text and intricate graphics onto plastic cards. With the 300 x 1200 dpi resolution advantage of the CD800 printer, you can print 6-point text, 2D bar codes and complex two-byte character sets with the confidence that they will all be sharp, legible and bleed-free.



## Engineered for enterprise-class ID card issuance

With its industry-leading speed, print quality and reliable performance, the Datacard® CD800™ card printer is the new workhorse for enterprise-class card issuance. And, as these specs show, the CD800 printer is engineered to fit your most demanding applications. You've read about it, now see a demo. Ask your Datacard Enterprise Solutions Provider about the CD800 card printer.

### CD800 Printer Standard Features

Print capabilities	One-sided (simplex) or optional two-sided (duplex) edge-to-edge printing Full-color and monochrome printing capability in the same printer Alphanumeric text, logos and digitized signatures; 1D/2D bar code images Printer pooling/sharing (available soon)
Print resolution	Standard mode: 300 x 300 dots per inch; standard text, bar code and graphics printing High-quality mode: 300 x 600 dots per inch; enhanced text, bar code and graphics printing 300 x 1200 dots per inch; enhanced text and bar code printing 256 shades per color panel
Print speed	Full-color printing: Up to 220 cards per hour printing cards on one side (YMCKT*) Up to 165 cards per hour printing cards on two sides (YMCKT-K*) Monochrome printing: Up to 1,000 cards per hour printing cards on one side (Black HQ*)
Card capacity	Automatic feed: 100-card input for 0.030 in. (0.76 mm) cards; 25-card output standard Front exception card slot Separate reject location and holding tray (two-sided printer model only) Input hopper empty detection
Printer driver	Adjustable color controls with image preview Pre-set area to block printing on magnetic stripe, with escapes for custom areas Utilizes Windows® XPS-based technology for high-fidelity printing Secure disabling of card remake Software Development Kit (SDK) for Windows operating system printer driver User interface languages available: English, Arabic, Spanish, German, Italian, Japanese, Traditional Chinese, Korean, and Portuguese
Warranties	30-month standard depot warranty; 30-month printhead warranty (no pass restrictions)

### CD800 Printer Field Upgradeable Options

Magnetic stripe encoding	ISO 7811 three-track option (high- and low-coercivity) JIS Type II single-track option Support for standard and custom data formats
Smart card personalization	Contact/contactless all-in-one reader iCLASS® by HID, read/write encoder Third-party OEM smart card option ready
Two-sided (duplex) printing	Factory option or field upgradeable

### CD800 Printer End-User Upgradeable Options

	Extended 100-card output hopper Extended 200-card input hopper Kensington® security lock for printer
--	--

### CD800 Printer Specifications

Physical dimensions	One-sided printing: L 17.4 in. x W 8.8 in. x H 8.8 in. (44.2 cm x 22.4 cm x 22.4 cm) Two-sided printing: L 21.2 in. x W 8.8 in. x H 8.8 in. (53.8 cm x 22.4 cm x 22.4 cm)
Weight	One-sided printing: 9.0 lbs (4.1 kg) (depending on options) Two-sided printing: 12.0 lbs (5.4 kg) (depending on options)
Connectivity	Bidirectional USB 2.0; Ethernet 10 Base-T/100-Base-TX (with activity light)
Plastic cards accepted	ISO ID-1/CR-80 size cards: 3.370 in. x 2.125 in. (85.6 mm x 53.98 mm) PVC with glossy laminate surface Select key fob cards (ISO ID-1/CR-80 size cards) Datacard® StickiCard™ adhesive-backed plastic cards
Card thickness accepted	0.010 in. to 0.037 in. (0.254 mm to 0.939 mm)

\*Ribbon type and number of panels: Y=Yellow, M=Magenta, C=Cyan, K=Black, T=Inline Topcoat; HQ=High Quality

## Discover how the CD800 printer fits your card issuance needs

Is the CD800 card printer the right choice for your applications? Find out by talking to your Datacard Enterprise Solutions Provider. They'll help you assess your requirements. Then, they'll show you how the CD800 printer works as part of a total card issuance solution that includes software, capture devices and Datacard® Certified Supplies.



## Support and service anytime, anywhere

Datacard Global Services stands ready to help you get optimum performance from your CD800 printer. This network of authorized service providers in 120 countries offers planning, implementation and support services when and where you need them. You'll work with skilled professionals backed by over 40 years of Datacard Group experience.

Distributed by:



7630 Commerce Way  
Eden Prairie, MN 55344  
888.437.9783 Toll Free  
952.975.0660 Fax  
www.identisys.com

Datacard, CD800, StickiCard, TrueMatch and TruePick are trademarks, registered trademarks and/or service marks of DataCard Corporation in the United States and/or other countries. Microsoft and Windows are registered trademarks of Microsoft Corporation. Kensington is a registered trademark of ACCO Brands Corporation. iCLASS is a registered trademark of HID Global. ENERGY STAR is a registered trademark owned by the U.S. Environmental Protection Agency. EcoPure is a registered trademark owned by Bio-Tec Environmental LLC. Names and logos on cards are fictitious. Any similarity to actual names, trademarks or tradenames is coincidental.

©2011 DataCard Corporation. All rights reserved. Specifications subject to change without notice.

DP11-9004