

Francisco Mendiola <mendiola@comfsm.fm> 

March 20, 2013 12:50 PM

To: Jenny Hainrick <jenniferh@comfsm.fm>

Cc: Grilly Jack <gjack@comfsm.fm>, Dana Lee Ling <dleeling@comfsm.fm>, Ali Olter <alfredo@comfsm.fm>, Mariana Ben <mben@comfsm.fm>, Joe Habuchmai <jhabuchmai@comfsm.fm>

Reply-To: mendiola@comfsm.fm

Re: Space issues for Pohnpei Campus Library

2 Attachments, 546 KB

Hi Jenny,

Thank you for bringing this matter to light again as I had concerned about LRC spaces meeting facilities standards. In fact we had plans for each campus to have adequate LRC at each campus. See attached plan.

According to former VPIA there is not need for a new or bigger library at Pohnpei campus and did not support the plans as present by our office and Penny. In addition, all major plans were put to hold due to the absence of the IEMP or program master plan.

The space utilization study has been approved and this item will be addressed, however your input and recommendations will be critical in the development of the plan.

Thank you.  
F. Mendiola

On 3/19/2013 4:51 PM, Jenny Hainrick wrote:

[Kaselehlia maing Director Mendiola,](#)

[I visited Pohnpei Campus last week and met with Acting Dean Jack regarding space issues for the library. He had indicated that there are plans for a new building for CTE and a probable relocation of faculty to new offices, thereby freeing up space for a possible relocation of the library.](#)

[What formal plans are in place for now, if any, and what is the target date of completion?](#)

[This information warrants the review of the team members as they may see that as something that has not been addressed by the college.](#)

[Please assist me with whatever information you may have on this.](#)

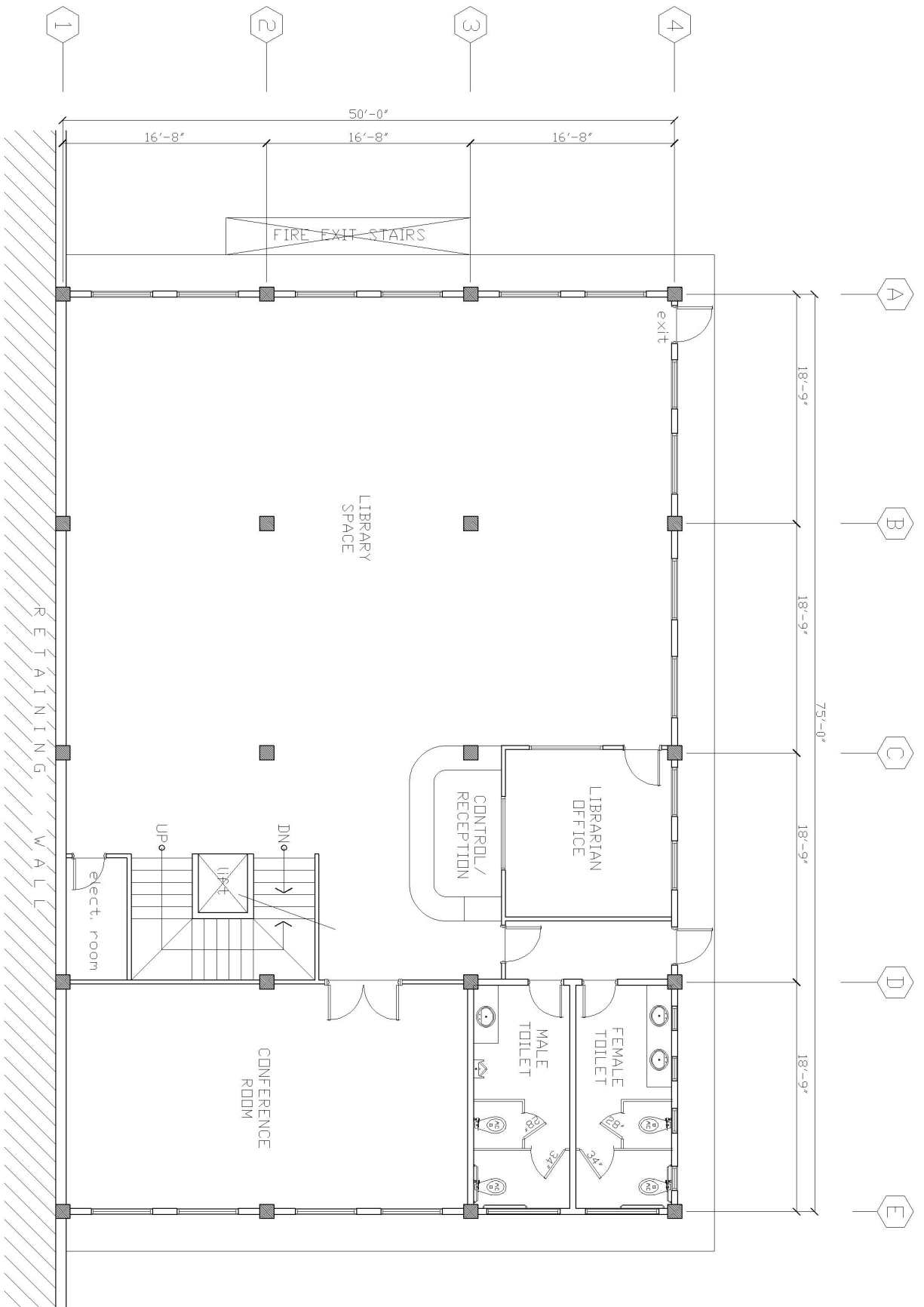
[Kalahngan,](#)  
[Ni wahu](#)

Jennifer Hainrick  
Director, Learning Resources Center  
College of Micronesia-FSM  
P.O. Box 159  
Pohnpei, FM 96941  
691.320.2480 ext. 140  
VOIP: 4130  
[jenniferh@comfsm.fm](mailto:jenniferh@comfsm.fm)  
<http://www.comfsm.fm>



[IDP121007.xls \(24 KB\)](#)





**1**  
**SECOND FLOOR PLAN**  
 SCALE 3/32" = 1'



**P.O. BOX 1**  
**POHNPÉ, CAMPUCHIA**  
**TEL: (855) 933 2386**  
**Fax: (855) 933 0722**  
**CONSULTANT**

**COM FSM**  
**POHNPÉ CAMPUS, POHNPÉ FM 96941**

**CONTENTS**

**PLAN**

Approval	
Approval	

Approval	
----------	--

REVISION	BY

**DATE: 01/11/2020**

**SCALE: AS SHOWN**

**DRAWN:**

**CHK:**

**SHEET**

**POHNPÉ CAMPUS LRC BUILDING**

**A-2**

//  
//  
//